

Surgeon's Perspective – Donor Focal Lesions ?Cancer

Mr D Vijayanand

Consultant Surgeon

The Leeds Teaching Hospitals NHS Trust

Donor to Recipient Transmission of cancer

- Very small – 0.01 to 0.05%*
- Unintended Transmission - 1 in 2000 organ transplants (SaBTO guidelines)
- Bad press

*Desai et al. Estimated risk of cancer transmission from organ donor to graft recipient in a national transplantation registry. BJS 2014; **101**: 768-774.

Unwanted Media Attention

[News](#) › [Health](#)

Three organ transplant patients die of cancer contracted from single donor, doctors report

DNA testing confirms four patients' tumours match breast cancer from woman who died of stroke before disease detected

<https://www.independent.co.uk/news/health/organ-transplant-breast-cancer-donor-sepsis-a8535861.html>

Tech & Science

Medical Nightmare: Woman Contracted Pancreatic Cancer From Transplanted Organ, Lawsuit Claims

The documents name the hospital where the surgery was performed (The University of California, San Francisco Hospital) and The Regents of the University of California in addition to two organ donation organizations, the United Network for Organ Sharing and Donor Network West, as defendants. Plaintiff ~~Jennifer Ravens~~ is suing for negligence, strict liability and breach of warranty

Unwanted Media Attention

'Cancer' liver transplant killed husband

By ~~JAMES TOZER~~, Daily Mail

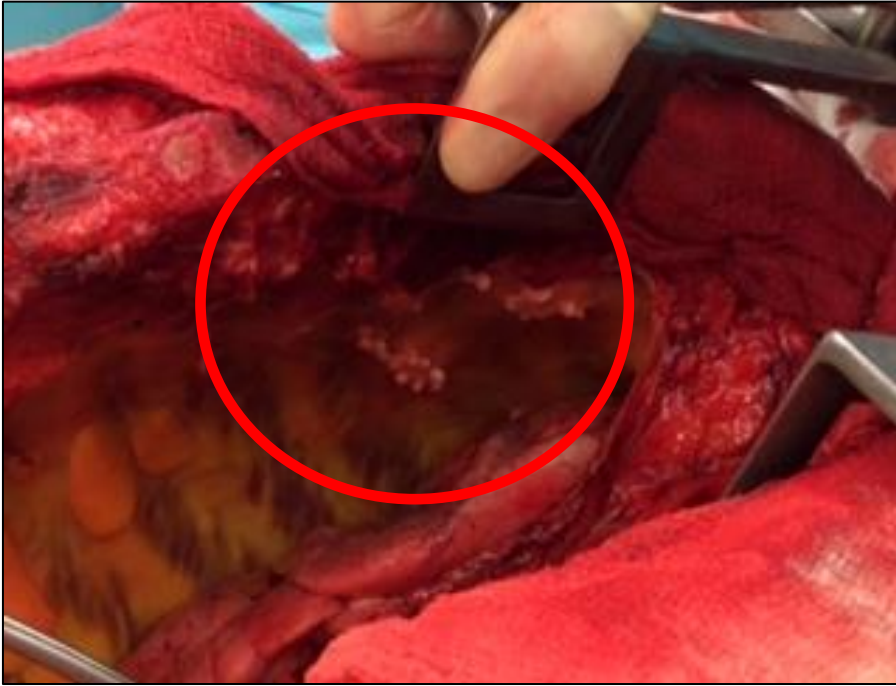
A father was given a cancerous liver in a transplant but doctors failed to warn him until six months after they had found out.

Former police constable ~~Peter Dickinson~~, 42, died two months after they finally told him.

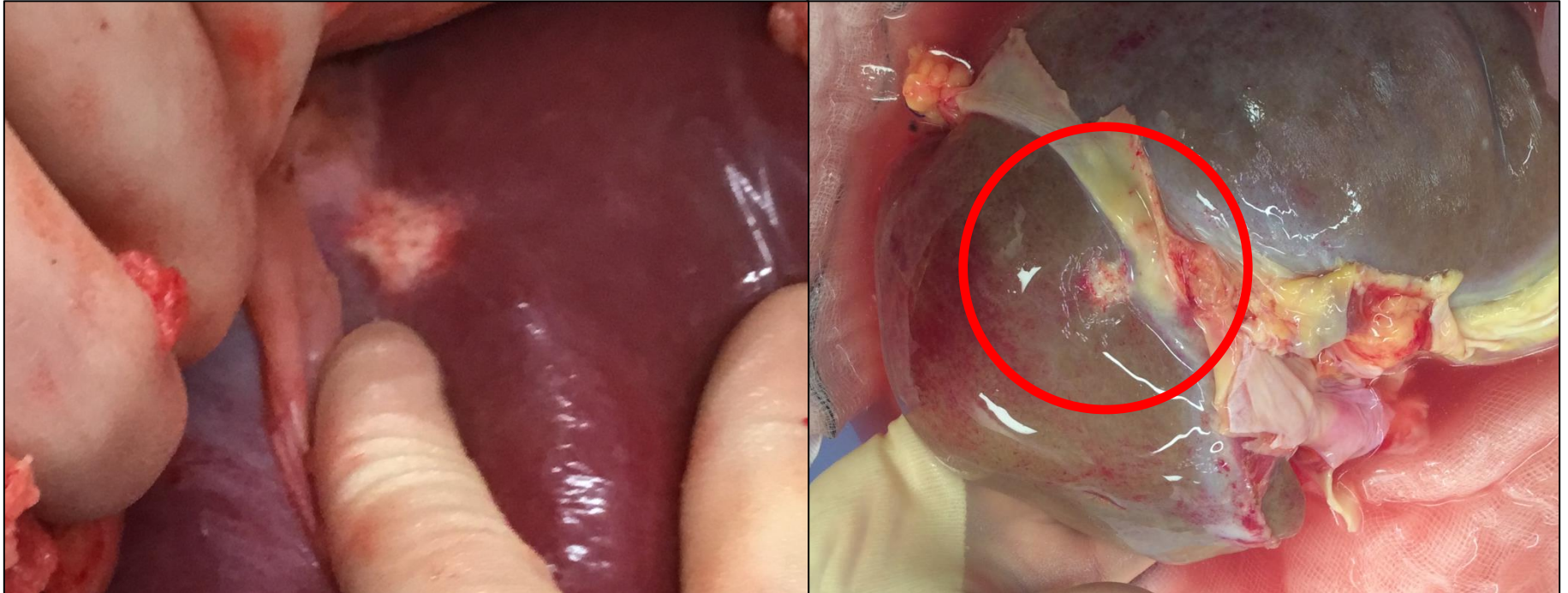
Risk Assessment

- Donor Screening
- Assessment at the time of retrieval
- Abnormal looking lesions or tissue needing further characterisation
- Frozen section assessment
- Recipient Selection and counselling

Pleural Plaques

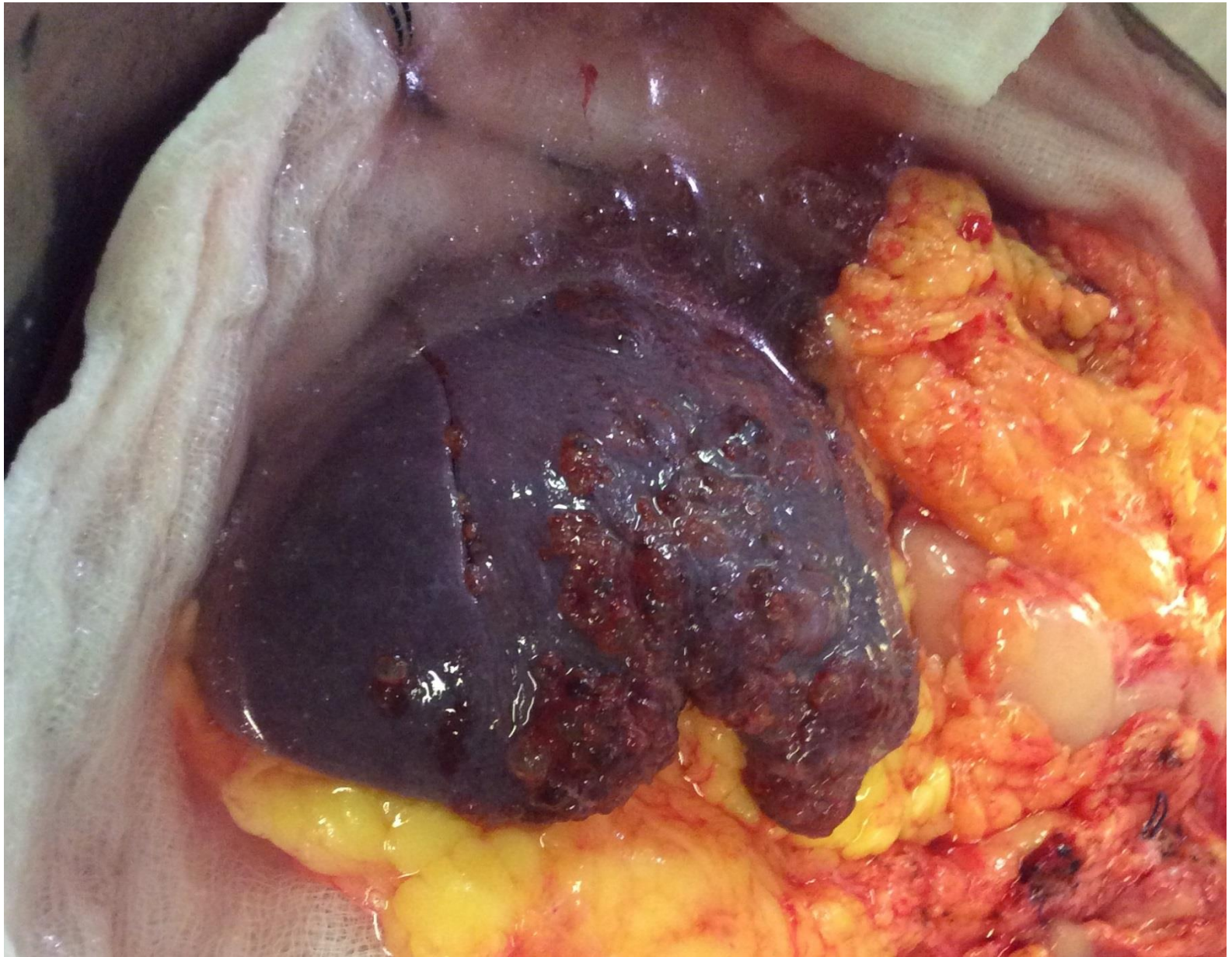


Focal Liver Lesion 1



Focal Liver Lesion 2





Donor Frozen Section Requests

- 1 in 15 donors for unsuspected lesions*
- Often performed out of hours
- Time Constraints
- Interpretation difficulties

* Leeds data 2017

What Next?

- Service Provision
- Turnaround time
- Digital Technology
 - Organ specific reporting

The Future is not what it used to be

Yogi Berra